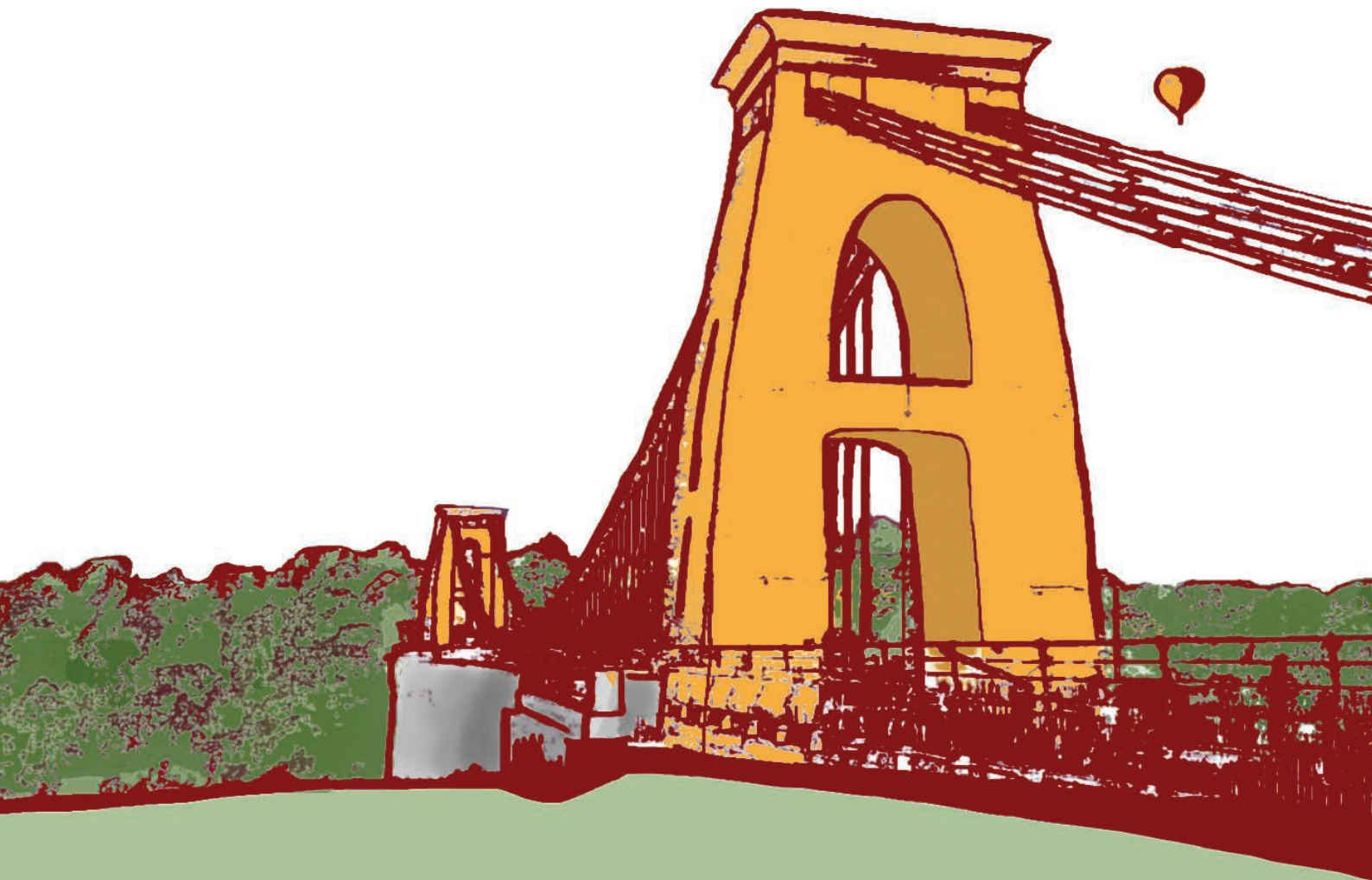




St Katherine's School



Sixth Form Prospectus





CONTENTS

| | | | |
|----------------------------|----|--|----|
| Welcome | 03 | Enrichment | 06 |
| Facilities | 04 | A Levels - What our students say | 06 |
| Sixth Form Leadership Team | 04 | Vocational Courses - What our students say | 06 |
| 21st Century Learning | 05 | Reasons to Study With Us | 07 |
| Transition and Careers | 05 | Enrolment Timeline | 07 |

Full course details are in our Course Outline booklet and on our website www.stkaths.org.uk



With an ethos of high expectations and a culture of excellence, St Katherine's Sixth Form aims to be one of the leading post-16 institutions in the South West.

At St Katherine's we inspire students to develop a love of learning and independent inquiry. Our approach is to nurture students to become self-governing young adults who aspire to achieve their full potential and equip them with the skills they need to continue onto higher education, training or employment.

The commitment you show, combined with the support that we provide, will enable you to succeed.

We offer a broad choice of courses to meet learner needs, reflecting the changing educational and employment climates around us. These include a range of A Level courses, vocational courses as well as GCSE re-sit opportunities in maths and English. We are also thrilled to be offering the Level 3 Extended Project and the ESB Level 3 Certificate in Speech as part of the extensive enrichment opportunities on offer. These are widely recognised by universities as valuable qualifications for students to undertake alongside their chosen programme of study.

Uniquely, we are the only school in the UK to own and run a high quality restaurant open to the public. 'The Leaf at Ham Green' is run by our Level 2 and Level 3 Hospitality students

who work in bespoke, industry standard facilities which are testament to our ambition of pursuing excellence for all our learners.

Above all, St Katherine's Sixth Form is a community. Our students study in a beautiful, rural setting and enjoy a high teacher to student ratio. This means we can offer them a personalised learning experience, get to know them well and help them find the best route to their future success.

I understand how important choosing a Sixth Form is for you and hope that this prospectus will answer your questions. Visitors to St Katherine's are always welcome and you can find out more about the Sixth Form, courses and entry requirements by going to www.stkaths.org.uk.

I look forward to welcoming you to St Katherine's School Sixth Form.

Steve Colebourne
Head of Sixth Form



Facilities and Sixth Form Leadership Team

St Katherine's Sixth Form is based in its own purpose-built block with facilities designed to meet the needs of our students.

THE COMMON ROOM

A dedicated, collaborative learning space where Year 12 and 13 students can study and share their stresses and triumphs. The Common Room is also used to welcome guest speakers from industry and university as well as assemblies, quizzes and charity events.

LEARNING RESOURCE CENTRE

The library offers a wide range of literature, resources and extensive ICT access plus a range of venues for students to study and engage in enrichment activities.

THE WORK ROOM

An exclusive space for Sixth Form students, the work room is equipped with workstations for independent work. Collaborative learning spaces and printing facilities are also available.

CHROMEBOOKS

All Sixth Form students use Chromebooks or laptops to access their learning. We use Google Classroom so students can enrich their understanding and collaborate with one-another on pieces of work both inside and outside of lessons. For more information on Chromebooks and other devices, please contact the Head of Sixth Form.

ADDITIONAL STUDY AREAS

Sixth Form students can use independent study areas in classrooms both in the Sixth Form block and around the school. Sixth Formers are also welcome to study at the back of a teacher's classroom when they are teaching another class. This allows greater focus during study periods and enables teachers to provide additional, bespoke support for independent learning.

The Sixth Form is proud to promote leadership opportunities whereby significant contributions can be made within the school and community.

We have a thriving Sixth Form Leadership Team, led by our Head Students. The team provides valuable input into the running of the Sixth Form as well as contributing to the wider school community.

They gain valuable leadership and management experience through organising events, chairing meetings, line-managing teams of students and promoting the pursuit of excellence.

The Head Students sit on the whole school council, alongside the House Leaders from our four houses, Pankhurst, Stephenson, Turing, and Yousafzai. This enables them to take items raised at a school level back to the Sixth Form leadership team, who support the lower school students in effecting change.

 I'm **lucky** that I've had **opportunities** to lead the school. I know these kind of opportunities will give me a **competitive edge** when I leave here.

Year 13 Student



At St Katherine's Sixth Form, we want all students to access the very best teaching and learning.



Students have access to the most effective technology and 21st century educational environments to accelerate their progress. This helps them develop skills to prepare them for life after sixth form, whether they choose to go to university, take up an apprenticeship or go into full time employment.

GOOGLE DRIVE

Teachers and students use Google Drive to collaborate on work, model best practice and provide regular, effective feedback.

GOOGLE CLASSROOM

Teachers use this innovative forum to provide students with dynamic educational resources enabling them to engage with their courses breadth and depth.

CLASSCHARTS

Sixth Form students use the ClassCharts platform to keep track of home learning. ClassCharts helps ensure students are fully supported in school and at home in achieving their goals. They receive commendations for exceptional work or behaviour through the system and teachers can notify tutors and parents any missed deadlines or lessons.

The move from KS4 to KS5 can be both daunting and challenging so we work hard to ensure this transition is as smooth and effective as possible for each student.

Making subject choices is a very important first step so each applicant is invited to a Course Consultation Meeting with the Head of Sixth Form or Deputy Head of Sixth Form. Parents and carers are welcome to join this discussion around subject choices and the opportunities they bring beyond the Sixth Form.

We can then ensure students are placed on a programme of study that is right for them and enables them to progress to their chosen route when they leave us. All prospective Sixth Form students are invited to join our 'Step into Sixth Form Day' which gives them first-hand experience of the level of work and dedication required to succeed. Coupled with our Summer Work programme in the weeks after GCSEs, this helps prepare students for those first important steps in moving from Year 11 to Year 12.

Additionally, our careers advisor and tutor team are on hand to provide up-to-date information, advice and guidance to ensure students understand the context of their educational journey. Our extensive enrichment programme of CV writing skills and interview techniques plus how to complete apprenticeship and UCAS

applications helps our students be competitive in employment and university markets.

This high quality support enables students to realise their aspirations. The majority of our students each year apply to university with others going on to secure a range of alternative pathways, including high quality apprenticeships and full-time employment.



There is a **good support network within the Sixth Form** - if I have a problem I know that it will be resolved quickly.

Year 12 Student

Enrichment and What our Students Say

St Katherine's Sixth Form students access a variety of enrichment opportunities.

Our bespoke enrichment programme is designed to widen students' skill set and prepare them for their next steps. From surfing in Devon to team building with the army, students are given the chance to develop their character in preparation for adulthood.

Students also have a structured tutor programme dedicated to educating and preparing them for when they leave formal education. Important personal and citizenship

topics like nutrition, budgeting, voting, personal finance and interview skills are covered to help them prepare for their next steps.

Our Sixth Form has been involved with high quality programmes such as the British Film Institute Programme, Access to Bristol, Nuffield Research placements, the Cambridge Summer School, as well as working with employers like Ernst & Young, Barclays, Lloyds and PricewaterhouseCoopers. These enriching and networking opportunities and experiences help to inform future pathways.



ACADEMIC PATHWAY

A LEVELS

- My timetable is highly academic and is designed for me to access universities, including the Russell Group.
- I have chosen three A level subjects that will prepare me to study a wide range of university courses.
- My timetable has the right blend of lessons, flipped learning periods, assessment periods and non-contacts.
- By having structured activities set for me during flipped learning periods, I have been able to become more focused.
- My lessons are engaging and my teachers really care about my future. They really want me to succeed.
- I have enrolled into the Pathways to Law programme at Bristol University which is giving me a real insight into the world of law and includes experience in law chambers.
- I am studying the Extended Project Qualification which is great for developing research skills and is something that universities look for.
- The Sixth Form has organised for me to attend university open days, careers fairs and lectures which is really helping me in deciding what I want to study.
- I really enjoy taking part in the enrichment activities like fundraising for charities and use a lot of my non-contacts to plan events with other students.
- This path has met my needs as I can secure a number of university courses when I leave.

APPLIED PATHWAY

VOCATIONAL COURSES

- I have chosen the applied pathway which gives me the option of university or apprenticeships.
- My timetable has academic aspects such as flipped learning periods, but also practical tasks such as managing an event.
- This allows me to stretch myself academically through revising content and developing exam skills and also helps me become more employable through working in teams on projects.
- My teachers set me clear tasks and using Google Classroom, I can see exactly what needs to be done and have access to everything I need all day.
- Having a Chromebook makes it easy for me to manage my time and be productive when working with other class members.
- I have taken part in a number of enrichment activities including practical interview sessions run by Lloyds Bank. This has allowed me to develop important life skills.
- I have received careers guidance throughout my time in sixth form and have listened to university student ambassadors and business advisors, so I feel informed about my next steps.

Reasons to Study with Us and Enrolment Timeline

Personalised learning experience

Average **grade of B-**

Enrichment and extension **opportunities** including Extended Project Qualification, Access to Bristol, Pathways to Law, & public speaking competitions

Sixth Form **residential trips**

Extensive student **leadership opportunities**

Small **class sizes**

Taught study skills across Years 12 and 13

21st Century Learning through the use of Chromebooks and Google Classroom

High quality pastoral care and guidance



St Katherine's is like **one big family**. It's **supportive** and **comfortable** and the teachers do anything they can to help."

Sixth Form Student

ENROLMENT TIMELINE

7TH
JANUARY
2019

Application form
deadline

EARLY
2019

Subject taster
sessions

NOVEMBER
2018 TO
MARCH 2019

Course
consultation
meetings

22ND
AUGUST
2019

GCSE results
day interview

4TH
SEPTEMBER
2019

Enrolment for
St Katherine's
Sixth Form



St Katherine's School

Ham Green
North Somerset
BS20 0HU

Telephone: 01275 373737
Email: school@stkaths.org.uk

www.stkaths.org.uk

 [@stkathsschool](https://twitter.com/stkathsschool)  [St Katherine's School](https://www.facebook.com/StKatherineSchool)

